

Liverpool Plaza Toreo Parque Central

Mexico City, Mexico

The façade of Liverpool Plaza Toreo Department Store is located on the Periferico Freeway, a road that connects Mexico City with Naucalpan, State of Mexico, and the busiest road in Mexico City.

The façade is very visible for drivers that can view the different tones of the façade gets depending on the day light.

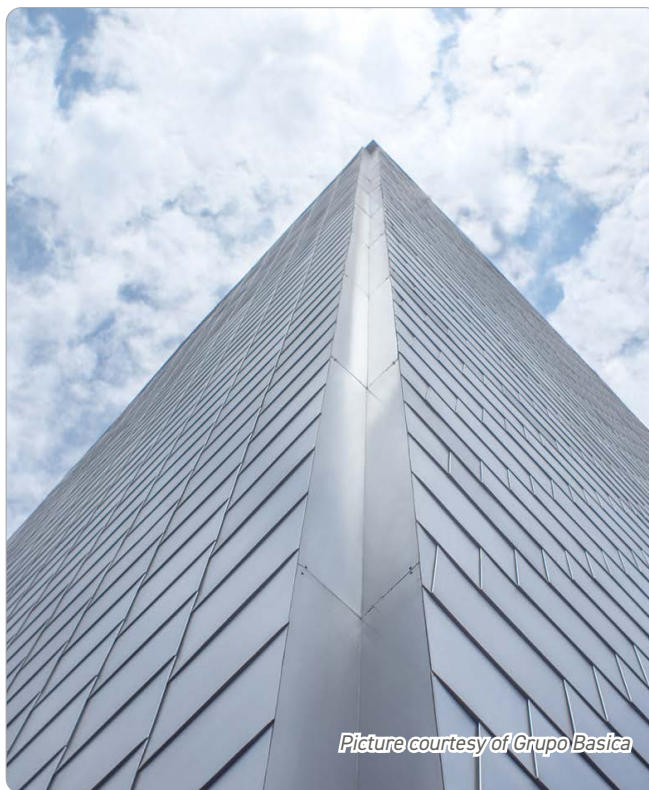
The way to assemble, a flat-lock system, seems as if they were fish scales. This technique of mechanical union avoids the use of welding, adhesives, sealants or liquid elements that could fail and stain the façade by draining them. This arrangement makes the façade waterproof since it allows the water to flow freely over the surface without entering the building, guaranteeing the watertightness. Also, fish scales is very attractive visually and undoubtedly attracts the

attention of people passing through the place. Liverpool Plaza Toreo is the only stainless steel façade of these dimensions in the metropolitan area of Mexico City and the second in the State of Mexico, the first is also of Liverpool Department Store but is located in Interlomas Mall in Huixquilucan State of

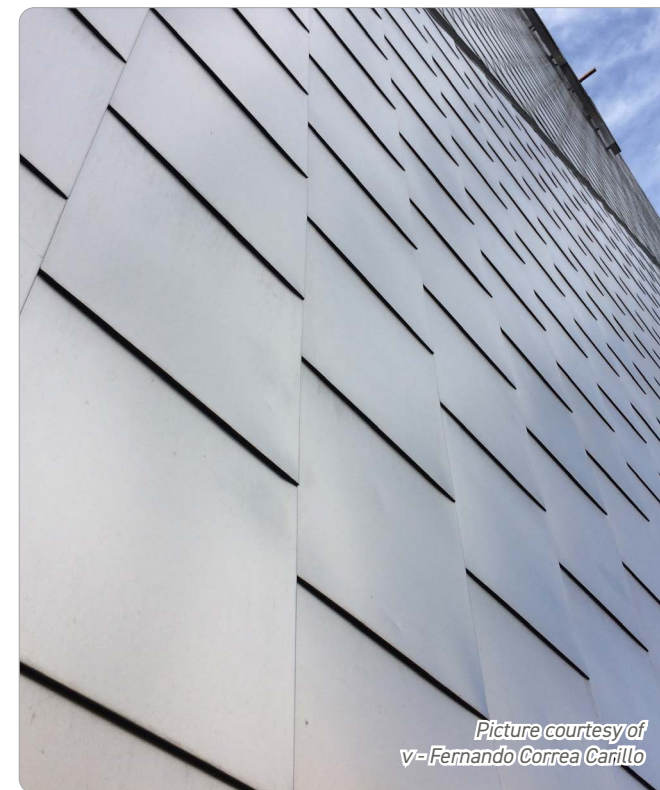
Mexico.

In this way, this façade is a great promoter of stainless in façades, as it is the only one of its kind in Mexico City and located on the busiest road in this city.

Environment:	urban
Use:	panel façade
Material:	316L with a 2B finish
Architects:	Grupo Basica
Photographs:	Grupo Basica / Iminox-F. Correa Carrillo / Iminox-G. Asoka Guadarrama
More information:	iminox.org.mx



Picture courtesy of Grupo Basica



*Picture courtesy of
v-Fernando Correa Carrillo*



Liverpool

EL MOLINITO
MEXICO - QUERETARO
NORTE

RODOLFO GARCIA
PERIFERICO

AC 6

E

Picture courtesy of IMINOX - Gabriel Asoka Guadarrama