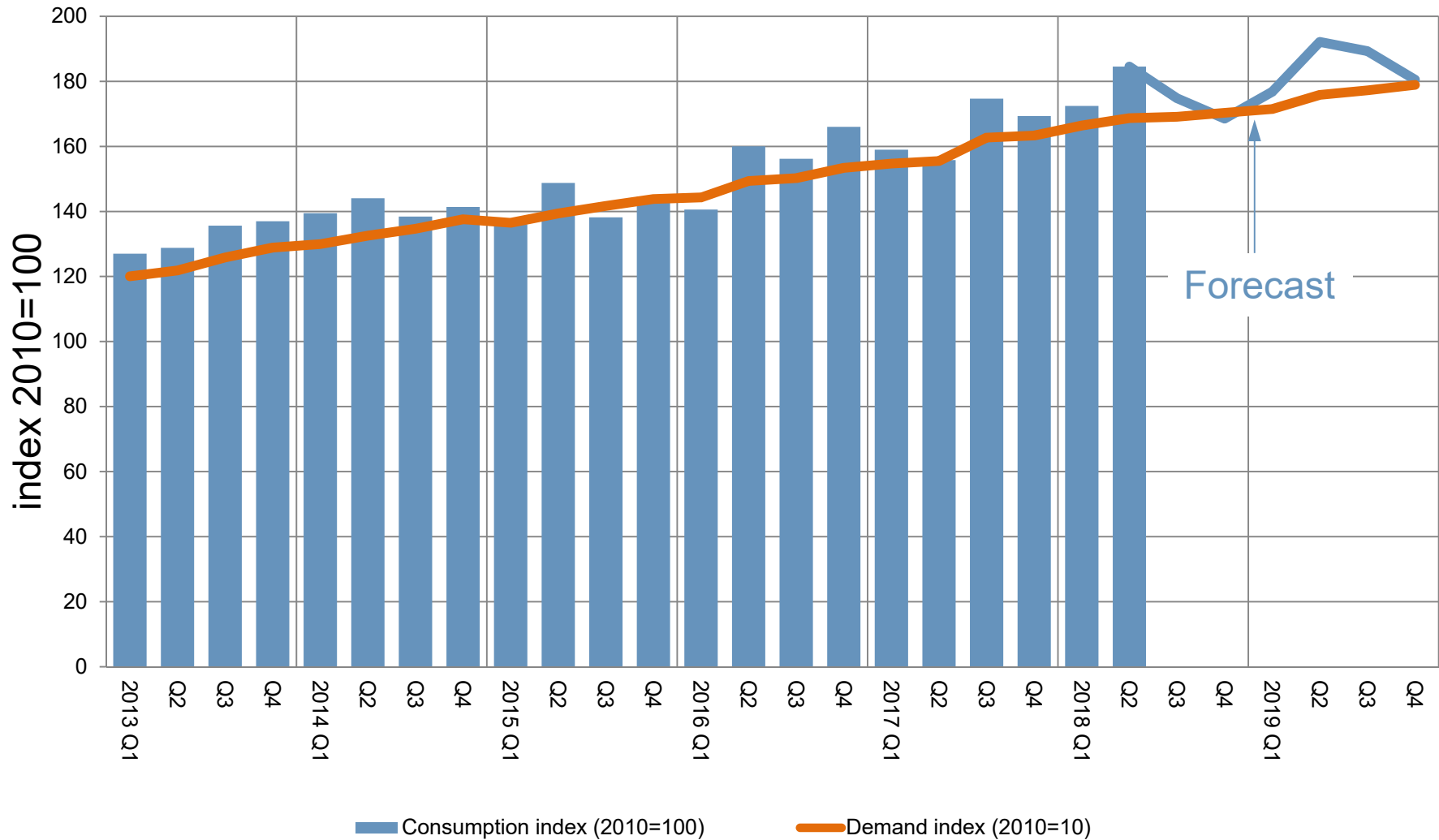


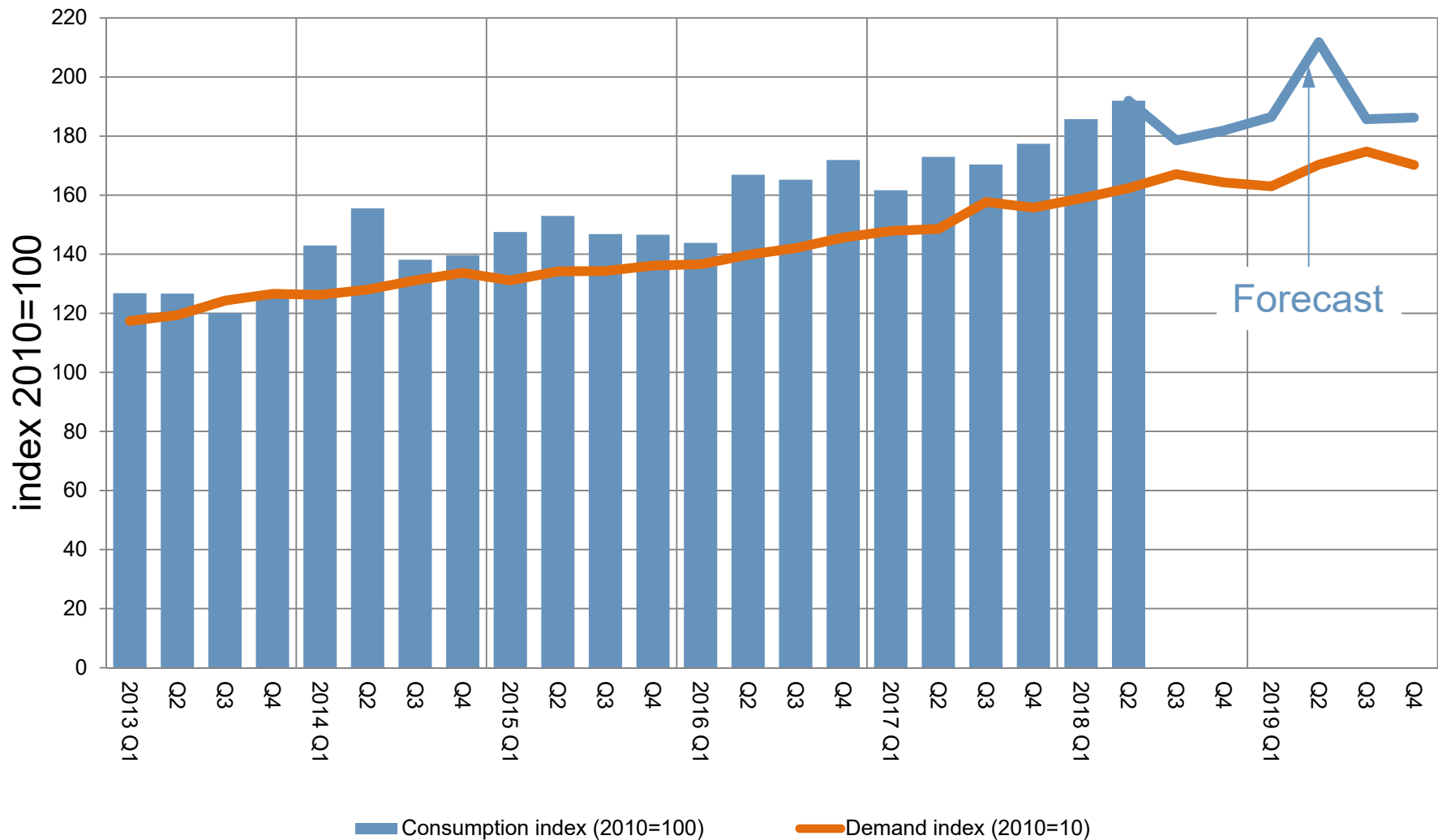
# Global consolidation

Stainless steel **cold rolled** flat product consumption index and demand index development [2010=100]



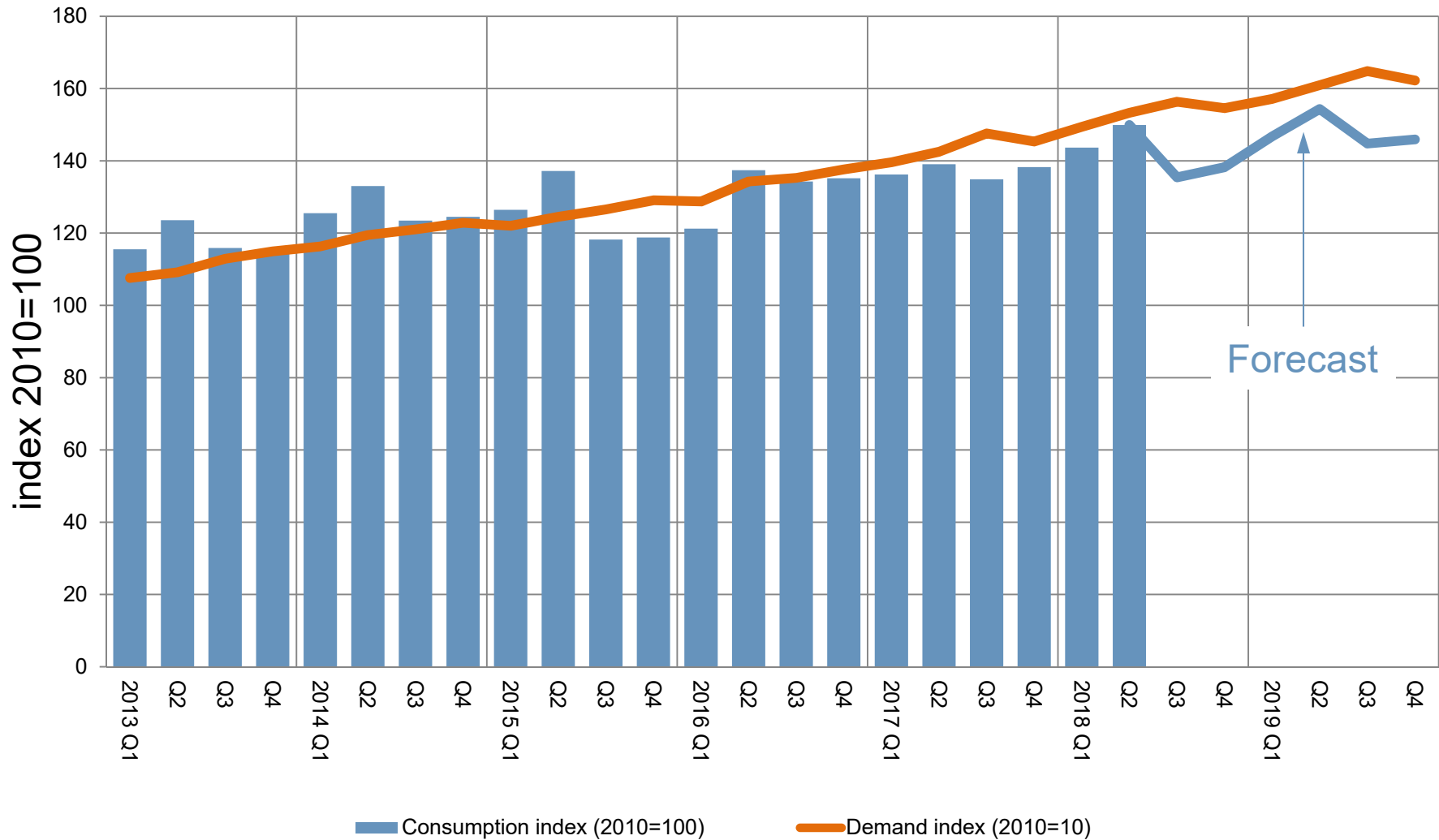
# Global consolidation

Stainless steel **hot rolled** flat product consumption index and demand index development [2010=100]



# Global consolidation

Stainless steel **long product** consumption index and demand index development [2010=100]



# Global consolidation

Stainless steel **all products** consumption index and demand index development [2010=100]

