

## The Tiger Enclosure

**Location: London, UK**

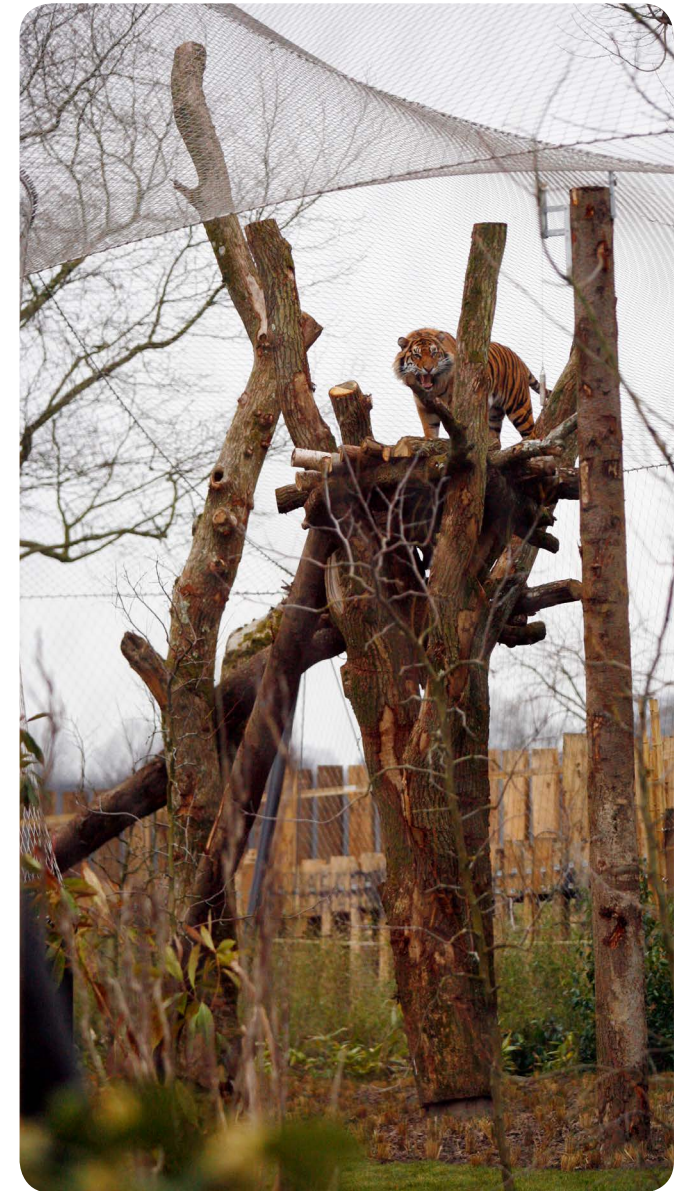
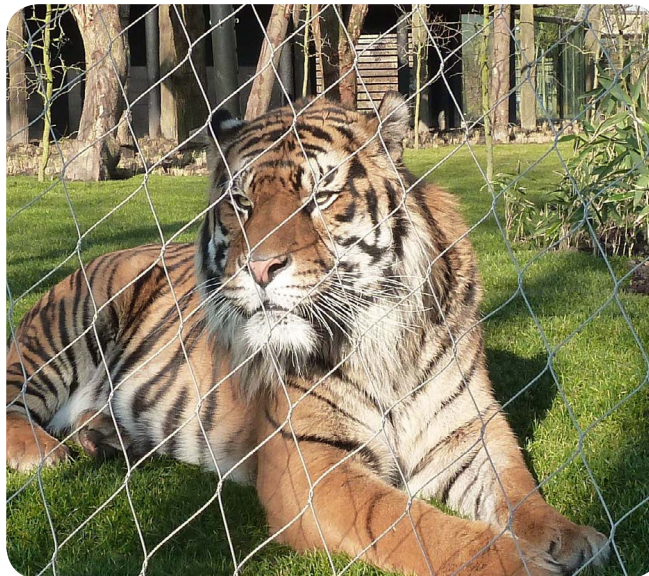
**Structural Engineers: David Dexter Associates**

The new compound of the Sumatran Tigers of the London Zoo was designed with the help of conservationists and experts to ensure that it meets the needs of these magnificent creatures. One of the most important requirements was for the roof of the 2500 square metre enclosure to be transparent, so that the tigers may be viewed from all aspects. Tigers in the wild like to observe their terrain from a high vantage point. Working with engineers and specialist subcontractors, the design team has been able to realise a concept incorporating a ground-breaking, transparent roof made from woven 316 stainless steel mesh, which combines high strength with lightweight. The roof reaches 17 meters in places in order to accommodate the tall trees and feeding poles and is set at a height to encourage natural climbing behaviour.

Sourced from the [MolyReview](#)

### Details

Environment:	urban
Year of completion:	2013
Grade:	Type 316
Material thickness:	3 mm
More information:	<a href="http://imoa.info">imoa.info</a>



*Pictures are courtesy of ZSL*

To see more stainless steel in architecture, [click here](#)