

## Rundle Mall Redevelopment

**Location:** Adelaide, Australia

**Architects:** Hassel Architects

A modern and innovative design using coloured and textured stainless steel has left an impressive statement on an Adelaide streetscape.

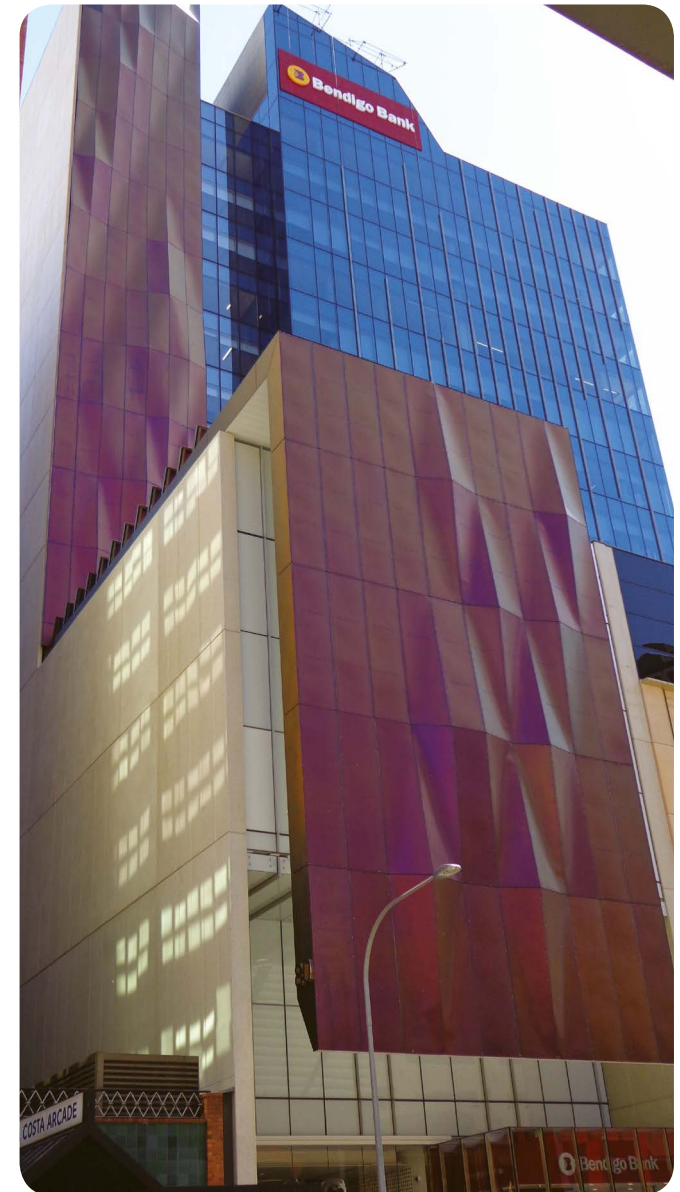
South Australia's premier shopping district Rundle Mall underwent a full makeover from 2012-2014 as part of the Adelaide City Council's initiative to revitalise the precinct.

Stainless steel was specified for this design as its inherent properties allowed for the level of manipulation required to construct the architect's creative expression, as well as provide a high quality and aesthetically pleasing finish.

The visually striking building façade integrates impressively into the Rundle Place precinct, and the outcome has resulted in a virtually maintenance-free and colour enduring structure.

### Details

<b>Environment:</b>	urban
<b>Grade/surface:</b>	304 coloured stainless steel
<b>Date of completion:</b>	2014
<b>Manufacturing company and material supplier:</b>	steelcolor.com.au
<b>More information:</b>	assda.asn.au



*Pictures courtesy of David Sandison*