

Dream Downtown Hotel

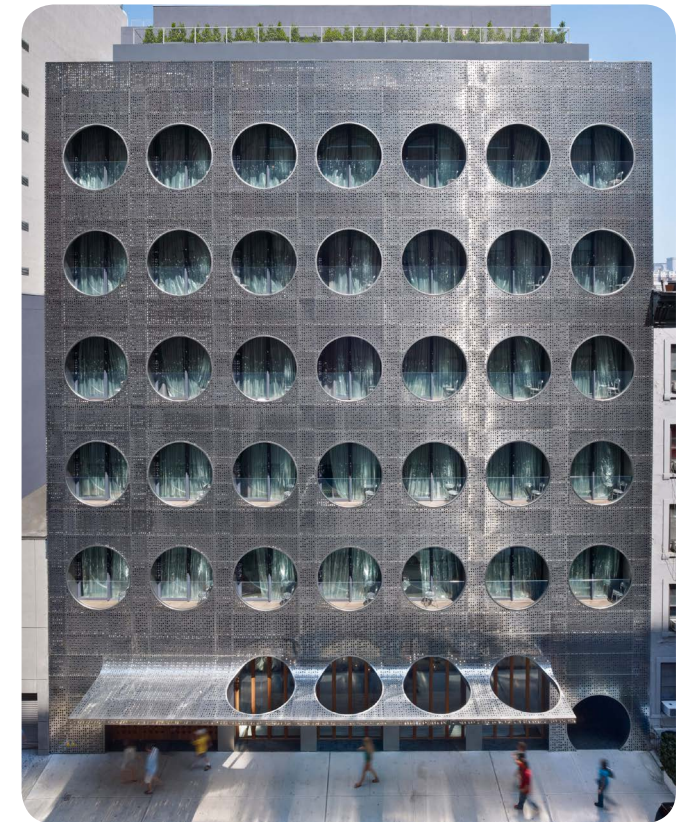
Location: New York, USA
Architects: Frank Fusaro, AIA,
 Partner, Handel Architects

Dream Downtown Hotel is a 184,000 SF boutique hotel in the Chelsea neighbourhood of New York City. The 12-story building includes 316 guestrooms, two restaurants, rooftop and VIP lounges, outdoor pool and pool bar, a gym, event space, and ground floor retail.

The “otherness” of Ledner’s 1966 design for the National Maritime Annex was critical to preserve. Along the 17th Street exposure, the sloped façade was clad in stainless steel tiles, which were placed in a running bond pattern like the original mosaic tiles of Ledner’s Union building. New porthole windows were added, one of the same dimension as the original and one half the size, loosening the rigid grid of the previous design, while creating a new façade of controlled chaos and verve. The tiles reflect the sky, sun, and moon, and when the light hits the façade perfectly, the stainless steel disintegrates and the circular windows appear to float like bubbles. The orthogonal panels fold at the corners, continuing the slope and generating a contrasting effect to the window pattern of the north façade.

The 16th Street side of the building, previously a blank façade when the building served as an

annex, was given new life. The skin is constructed of two perforated stainless steel layers, its top sheet of holes a replication of the 17th Street punched-window design and the inner sheet a regular perforation pattern. The outer rain screen is punctured with porthole-shaped Juliet balconies for the guestrooms and peels up at the ground level to form the hotel canopy and reveal the hotel entrance.



Details

Environment:	urban
Date of completion:	2011
Manufacturer:	azahner.com
More information:	handelarchitects.com

Pictures are courtesy of Bruce Damonte

To see more stainless steel in architecture, [click here](#)